

Engines for maritime applications



The engine company.



Facts

It all began with an amazing idea. Nicolaus August Otto discovered the principle of the **4**-stroke engine, thereby creating the basis for global motorisation and our mobile society. Today, more than **800** sales and service partners provide our customers with support, **24** hours a day, **7** days a week, in **130** countries all over the world. **4.000** excellently trained and motivated DEUTZ employees provide you with support throughout the world at all times. Our state-of-the-art logistics centres boast around **80.000** parts: from the smallest sealing ring to precision crankshafts. A sophisticated logistics system means that our spare parts are always promptly supplied to our customers and dealers around the world.

DEUTZ builds engines for maritime applications with power ratings from **72** to **500** kW and a stroke volume ranging from **4.8** to almost **16** litres. Be it with **4** or **6** or **8** cylinders, with or without turbo:

DEUTZ engines for maritime applications have proven themselves worldwide. From Malaysia to Morocco and from Germany to India.

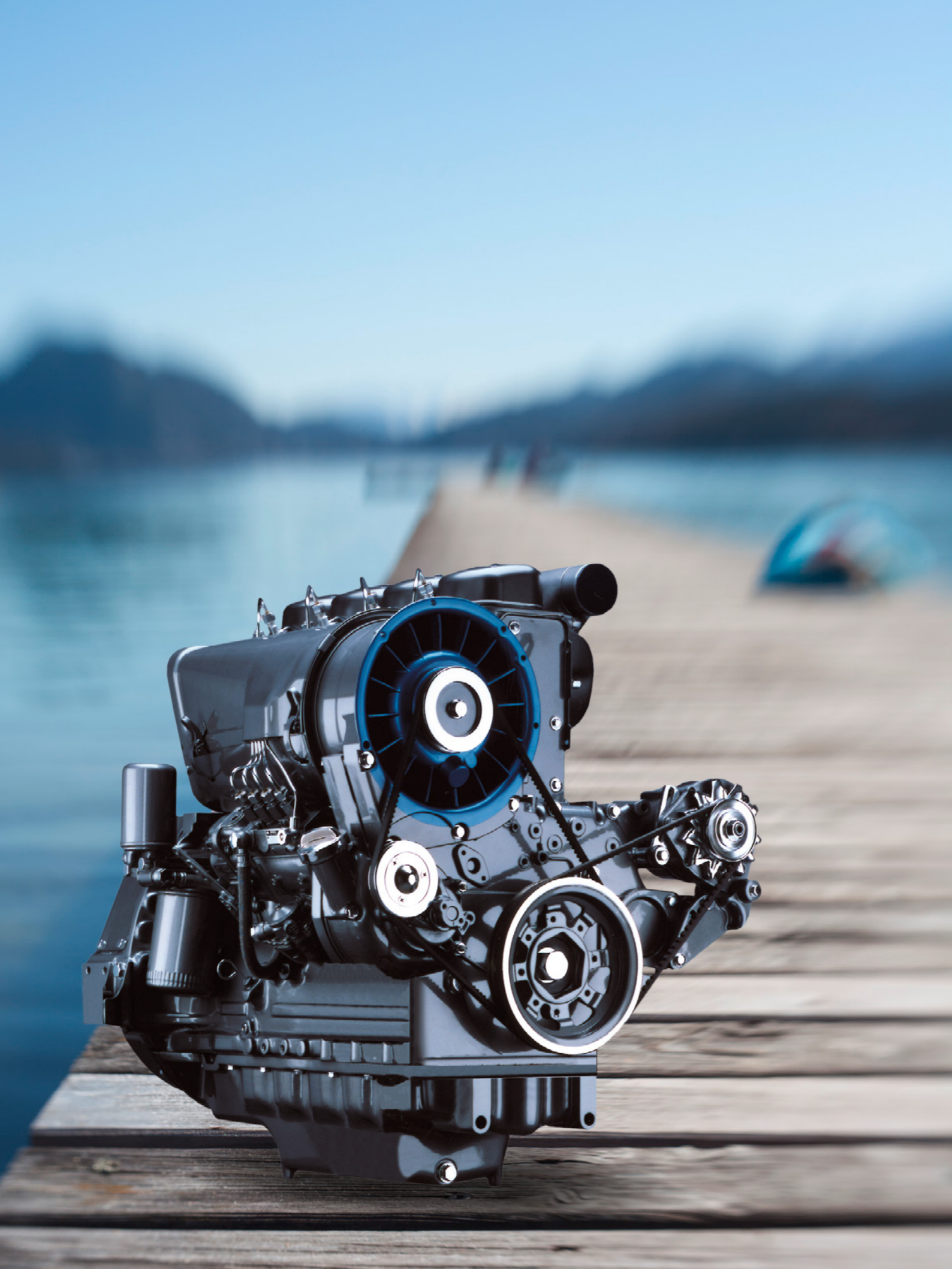
Facts such as these have made the DEUTZ brand a global industry standard.

created by **DEUTZ**



Engines – our **maritime** all-rounders

Anchored in the long maritime tradition of a leading engine manufacturer, DEUTZ engines are famous as ship drives and auxiliary drives all over the world. To further strengthen the position of our customers in the maritime domain, we at DEUTZ have concentrated on the area of compact engines for ship drives.



DEUTZ 914M

Engines for gensets and auxiliary drives

Key characteristics:

- 73 to 137 kW at 1500 to 2300 RPM
- 6 cylinders in line
- Stroke volume 6.1 litres
- Suction engine with turbocharging
- Air cooling (integrated axial fan)

Benefits for you as the user:

- Modular construction with individual cylinder arrangement and maximum parts commonality
- Simple and cost-effective installation through low weight and compact dimensions
- Easy to service thanks to few service points
- Long service intervals
- Low operating costs
- Exemplary low fuel and oil consumption
- Extremely smooth operation due to minimum vibrations
- Low noise emission - no expensive insulation measures for noise reduction required
- Connection option for cabin heating
- Classification by all leading classification societies
- Exhaust air box for insulation of surface heat radiation

DEUTZ 1013M

Engines for main drives, gensets and auxiliary drives

Key characteristics:

- 72 to 195 kW at 1500 to 2300 RPM
- 4 or 6 cylinders in line
- Stroke volume 4.8 or 7.2 litres
- Turbocharging, charge-air intercooling optional
- Cooling variants: Keel cooling, raw water cooling and fan drive for mounting on front cooler
- Mechanically controlled engine
- Direct injection

Benefits for you as the user:

- Compact dimensions for minimal space requirements and low installation costs
- Intelligent concept with shared components for cost savings in repairs as well as in complete overhauls
- Easy-to-service service points on one side of engine
- Advanced high-pressure injection system with individual injection pumps
- High level of cost-efficiency through low fuel and oil consumption
- Exemplary low noise emission
- Classification by all leading classification societies
- Connection option for heater or warm water boiler to engine cooling circuit
- Liquid-cooled exhaust line
- Liquid-cooled turbocharger
- PTOs





Engines – fulfil high demands

The functions, intended purposes and application locations of DEUTZ engines are wide and varied. In most cases the requirements can be summed up simply as follows: Cost-efficiency and reliability are of top priority for every application. Our ship engines are specially developed for marine applications and comply with the requirements of classification societies. Type approvals of the IACS classes and other classes are available on request.

powered by **DEUTZ**

DEUTZ 1015M

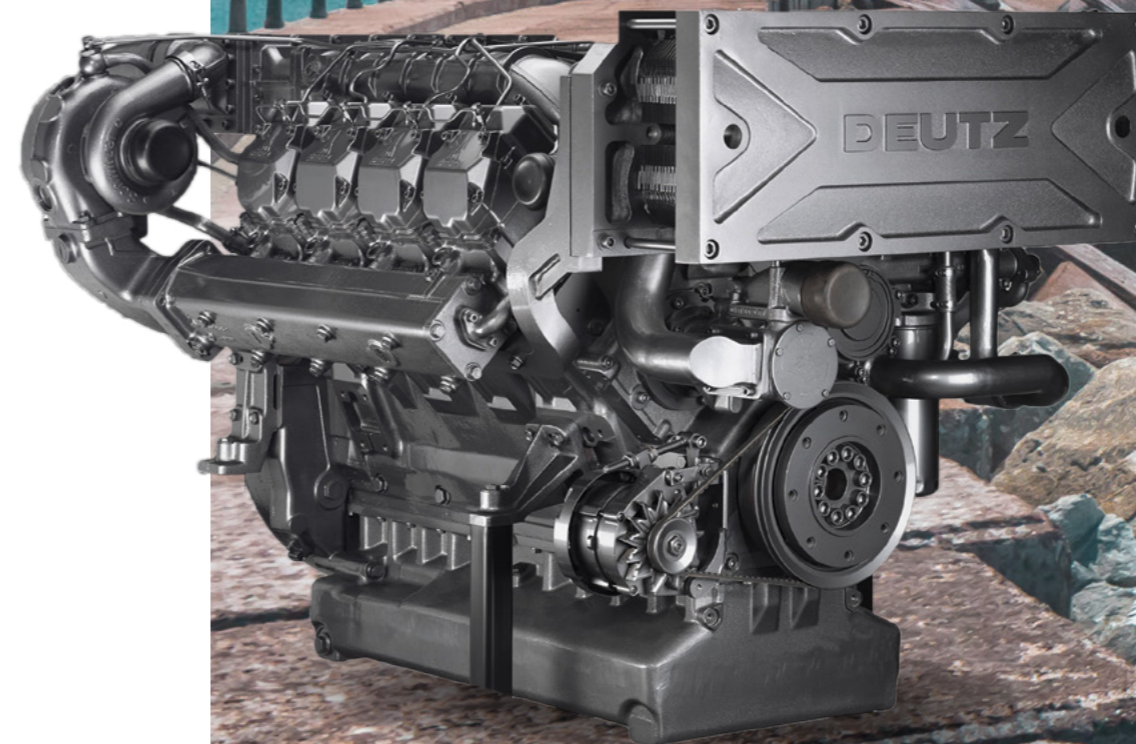
Engines for main drives, gensets and auxiliary drives

Key characteristics

- 203 to 447 kW at 1500 to 2100 RPM
- 6 or 8 cylinder in V arrangement
- Stroke volume 11.9 litres (V6) or 15.9 litres (V8)
- Turbocharging and charge-air intercooling (optional for V6)
- Cooling variants: Keel cooling and raw water cooling
- Mechanically controlled engine

Benefits for you as the user

- Compact dimensions
- Advanced injection system with mechanical speed governor
- Innovative Multi-Parallel-Kühlsystem® cooling system, which reduces fuel consumption
- Low maintenance costs due to heat exchanger in the form of plate cooler
- High degree of reliability and durability through integrated pipelines
- Exemplary low noise emission
- Classification by all leading classification societies
- Connection option for heater or warm water boiler to engine cooling circuit
- Liquid-cooled exhaust line
- Liquid-cooled turbocharger
- PTOs



DEUTZ 2015M

Engines for main drives, gensets and auxiliary drives

Key characteristics:

- 210 to 500 kW at 1500 to 2100 RPM
- 6 or 8 cylinder in V arrangement
- Stroke volume 11.9 litres (V6) or 15.9 litres (V8)
- Turbocharging and charge-air intercooling
- Cooling variants: Keel cooling and raw water cooling
- Electronically controlled engine

Benefits for you as the user:

- Extremely compact engine design
- Customer-oriented, modular system for optional add-on parts, which reduces installation costs
- Integrally-driven cooling water pumps simplify installation of keel and raw water cooling
- Low fuel consumption
- Low maintenance costs for high lifespan with significantly reduced operating costs
- Powerful and robust electronic solenoid valve system (MVS) and electronic engine control (EMR 3) with intelligent connection to drive management for optimal engine performance
- Connection option for heater or warm water boiler to engine cooling circuit
- Liquid-cooled exhaust line
- Liquid-cooled turbocharger
- PTOs



Cost-efficiency – significant **requirement** for construction and use

With innovative engineering and state-of-the-art development, DEUTZ engines stand for dependability and reliability in every-day use, which you as the customer have come to expect. Especially when it comes to cost-efficiency, DEUTZ drives set standards. Besides their advanced and practice-oriented design, our drives are characterised by an exemplary cost-benefit ratio. High cost-efficiency and exemplary exhaust emission values for environmental protection are part of the DEUTZ standard.





Service and spare part supply – your expectation, our **obligation**

As a DEUTZ customer it is your right to expect top product quality and consistent performance of our engines in terms of cost-efficiency and environmental aspects – all over the world irrespective of the conditions. And we are perfectly prepared precisely for that, because our service and after-sales department provides a wide and solid basis of expert knowledge – worldwide, day and night. We guarantee optimum support throughout the life cycle of our engines.

Our well-trained service personnel promise competent advice and quick assistance in case of problems of any nature. Individual service and maintenance contracts, a fast supply of spare parts and excellent training pro-

grammes round off our convincing range of offers. Conclusion: At DEUTZ you receive more than just engines.

When purchasing spare parts, you should also only trust DEUTZ parts. Our spare parts are continuously tested and optimized. In many cases we design these specially for your application. Spare parts of this nature are not available on the open market. Consequently, protect your warranty claims and the performance and lifespan of your DEUTZ engine. Because it is only with original spare parts that a DEUTZ remains a DEUTZ.

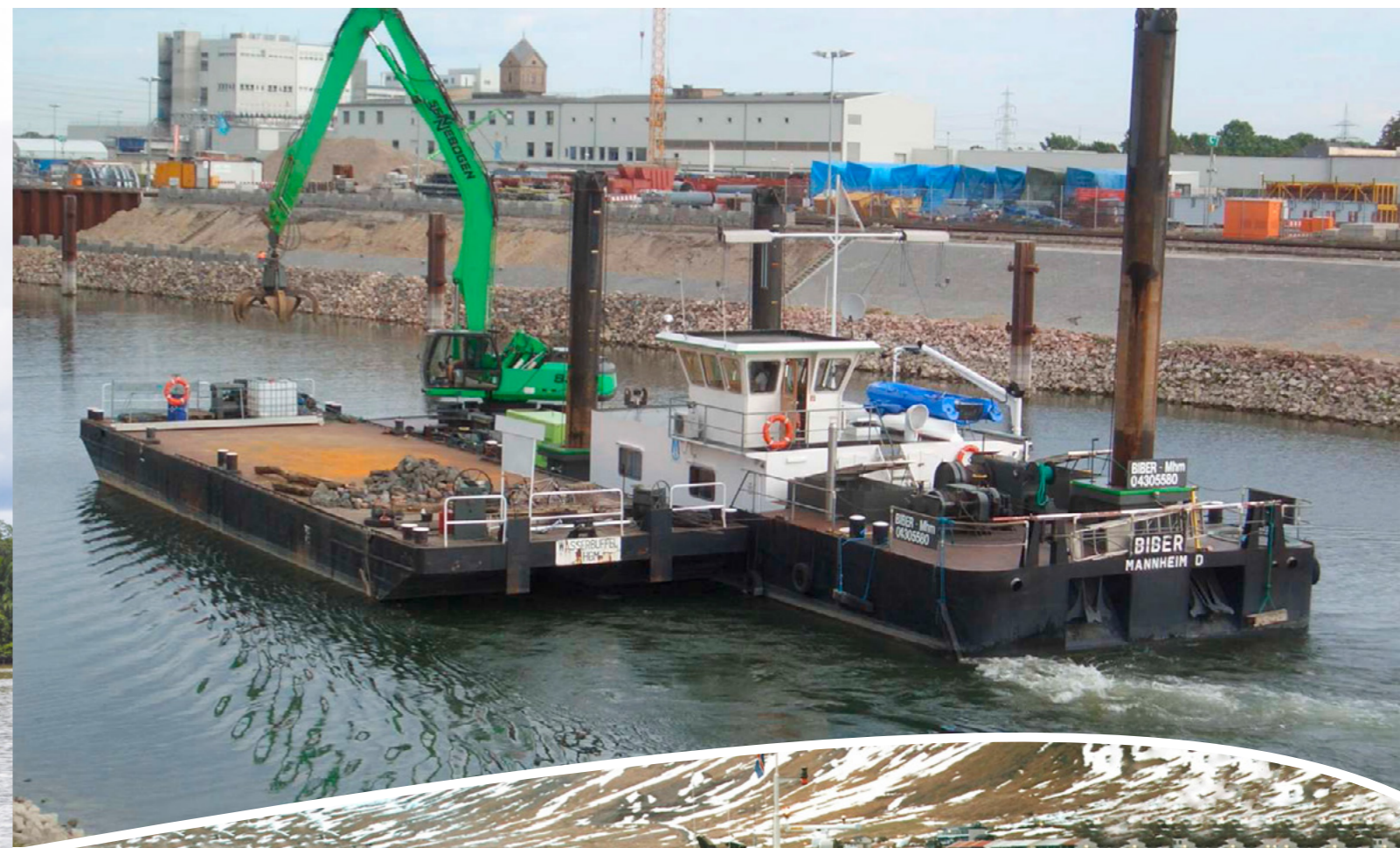
Applications – as varied as your requirements

Be it 24 or 500 kW power output, or three, four, five, six or eight cylinders: Every DEUTZ ship engine is built to match your intended application. All our 'Made in Germany' marine engines are products that have evolved as a result of know-how that has grown over generations at the oldest engine manufacturer in the world. Despite their variety, all DEUTZ motors have the most important thing in common: low operation and maintenance costs and a high lifespan. And they have been tried and tested in millions of applications across the globe.



2 x TCD 2015 V8 | 2 x BF6M 1013 MC | passenger vessel Loreley Elegance





BF8M 1015 MC | fishing boat Iceland



2 x BF8M 1015 MC | OHF 207 work boat



2 x BF6M 1015 MC | tanker Ecomar Russia

international:

DEUTZ AG

Ottostr. 1
51149 Cologne, Germany
Tel.: +49 (0) 221 822-0
Fax: +49 (0) 221 822-3525
E-mail: info@deutz.com
www.deutz.com

DEUTZ Corporation

3883 Steve Reynolds Blvd.
Norcross, GA 30093, USA
Tel.: +1 770 564 7100
Fax: +1 770 564 7222
E-mail: engines@deutzusa.com
www.deutzamericas.com

DEUTZ (Beijing) Engine Co., Ltd.

1102 CITIC Building
19, Jian Wai Dajie
Beijing 100004, China
Tel.: +86 10 65 25 41 86
Fax: +86 10 65 12 00 42
E-Mail: dbj@deutz.com.cn
www.deutz.com.cn

DEUTZ Asia-Pacific (Pte) Ltd.

10 Gul Crescent
Singapore 629523
Tel.: +65 66 72 7800
Fax: +65 62 64 1779 / 62 65 3007
E-mail: dap@deutz.com
www.deutz.com.sg

Deutz Australia Pty. Ltd

Unit 4, 13-15 Brough Street
Springvale, Vic, 3171, Australia
Tel.: +61 3 9549 8400
Fax: +61 3 9549 8490
E-Mail: deutzoz@deutz.com
www.deutz.com.au

The engine company.

